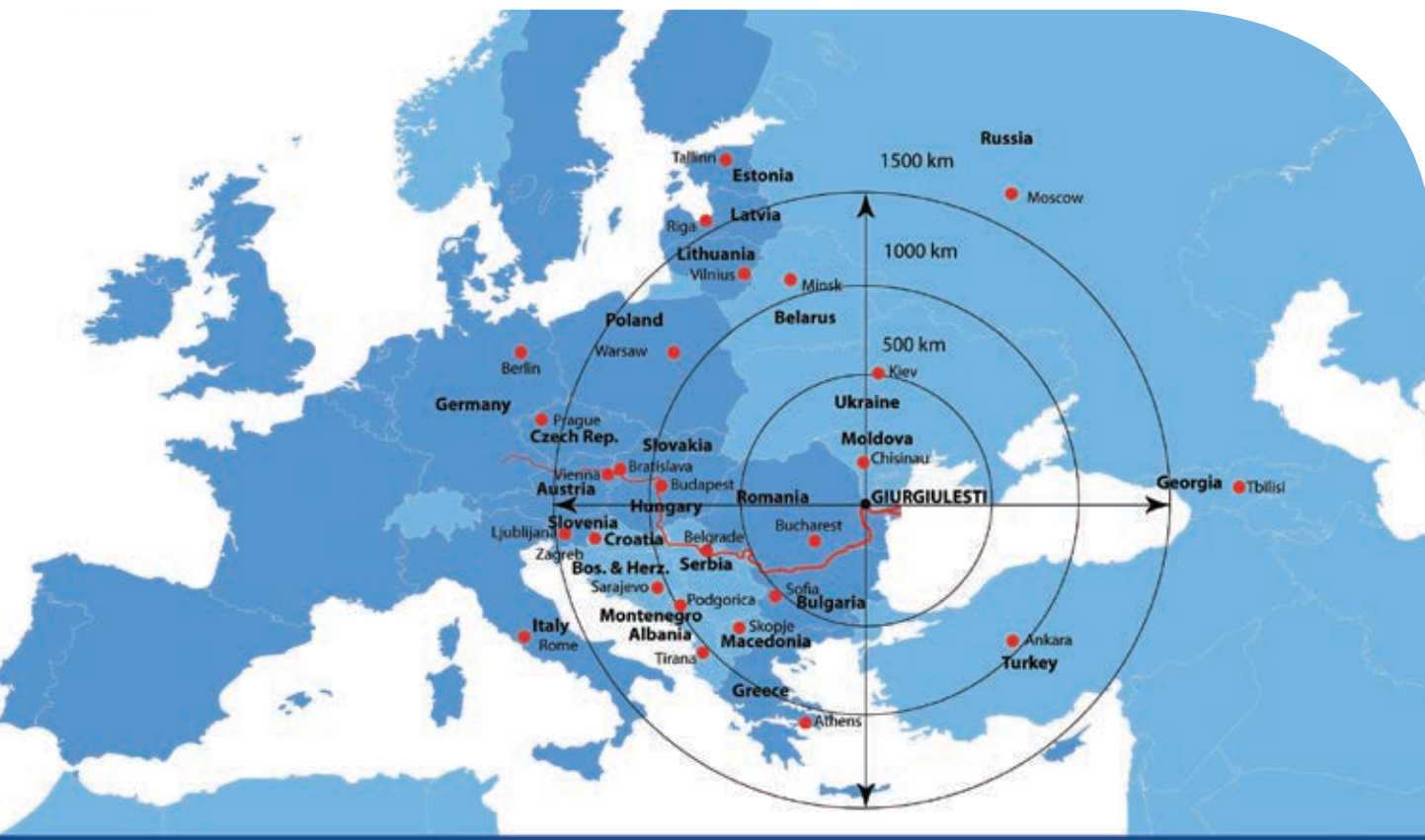


YOUR GATEWAY TO MOLDOVA



GIURGIULESTI INTERNATIONAL FREE PORT





Location and Regional Profile

Giurgiuilesti International Free Port (GIFP) is situated at 133.8 km / 72.2 nautical miles from the Black Sea on the maritime section of the river Danube. GIFP benefits from its strategic location in close proximity to Moldova's borders with Romania and Ukraine. Due to its easy access to the Black and Mediterranean Sea with maritime vessels, to countries located along the Danube with river barges as well as inland rail connections to both the CIS and EU countries, GIFP is developing into a major logistics hub not only for Moldova, but for the entire region.

Against this Background GIFP Serves its Clients as:

- *the only direct sea/river-borne transshipment and distribution point to and from the Republic of Moldova,*
- *a regional logistics hub on the border of the EU with access to road, rail, river, sea, and*
- *an excellent location for businesses due to GIFP's strategic location, tri-modal transport infrastructure, low cost environment and its unique customs and tax regime*



Oil Product Terminal

The Oil Product Terminal is owned and operated by Danube Logistics. The water depth at the oil terminal jetty is at least 7m and therefore can be accessed by both river barges and maritime vessels.

in brief:

- *one jetty on the river Danube with a minimum water depth of 7 m*
- *simultaneous discharge/loading of up to 3 products*
- *eight tanks, with a total capacity of 63,600 cubic meters*
- *truck-loading facilities*
- *mixed-gauge railway terminal*

Container and General Cargo Terminal

On January 11th 2012, Danube Logistics started the operation of its new Container and General Cargo Terminal (CGCT). The terminal is connected to the Port of Constanta by a weekly container feeder service operated by Danube Logistics.

in brief:

- open storage area - 20,000 sqm
- direct connection to railway
- 48 plug-in points for reefer containers
- Sennebogen mobile harbor crane, Kalmar reachstacker, two fork lifts
- minimum water depth - 5 m





Bulk Cargo Terminal

The Bulk Cargo Terminal owned and operated by Danube Logistics is located on the river Prut on a territory of about 3 ha. The terminal is mostly used for the import of aggregates from river barges to railway wagons and trucks. Vessels are either discharged by floating crane or a mobile harbor crane.





in brief:

- one jetty with minimum water depth of 7 m
- storage capacity 6,000 metric tons
- loading speed of up to 250 mt/h

Vegetable Oil Terminal

The vegetable oil terminal of Giurgiulesti International Free Port started its operations in November 2011. Trans Bulk Logistics, a subsidiary company of Trans Oil Group of Companies, constructed and operates the vegetable oil terminal in collaboration with Danube Logistics.



Grain Terminal

in brief:

- one jetty on Prut River with a minimum water depth of 5 m
- total storage capacity of 50,000 metric tones
- loading speed of up to 200 mt/h
- one jetty on Danube River with a minimum water depth of 7 m under construction

The grain terminal of Giurgiulesti International Free Port started its operations in July 2009. Trans Cargo Terminal, a subsidiary company of Trans Oil Group of Companies, constructed and operates the grain terminal in collaboration with Danube Logistics.



Mixed-Gauge Rail Terminal

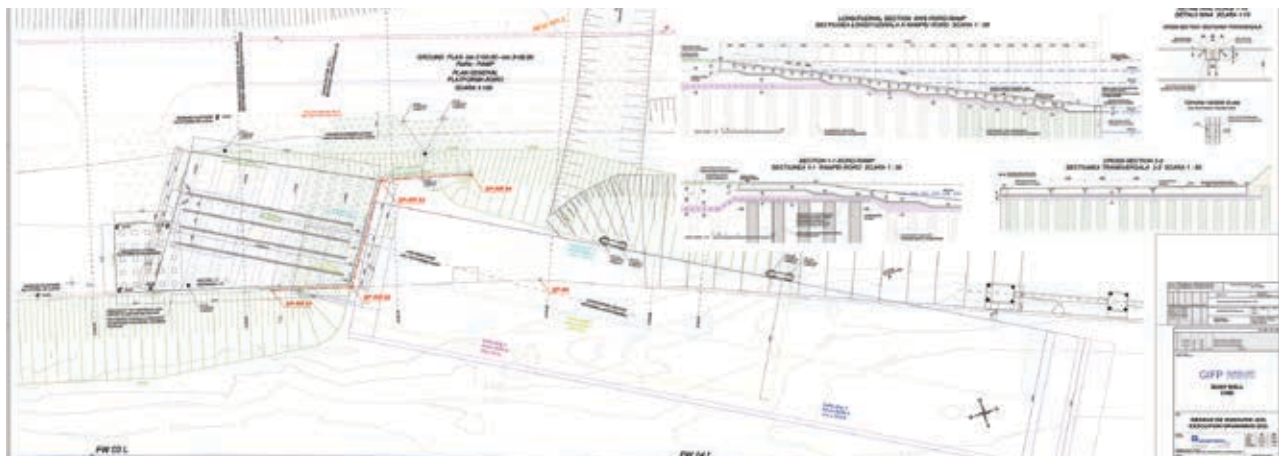
The Mixed-Gauge Railway Terminal is operational since September 2014. Being Moldova's first privately held mixed-gauge rail terminal, the facility allows transshipment of liquid as well as dry cargo, including containerized cargo, directly from the European narrow-gauge and the broad-gauge railway used throughout the countries of the former Soviet Union.



New Developments

RORO Terminal

Adjacent to the General Cargo and Container Terminal, Danube Logistics is in the process of constructing a RORO ramp.



Air

Three international airports are situated close to GIFP. One is in Chisinau - 230 km, one in Bucharest - 250 km and one in Odessa - 290 km

Transportation Links

Danube Logistics forms a regional logistics hub, by offering sea/river, road, rail and air transportation links.



Rail

Direct, CIS Rail and EU Rail connections

Sea & River

- Main destinations: Black Sea, Mediterranean Sea, Caspian Sea and the Danube
- Weekly container feeder service, operated by Danube Logistics, between GIFP and Constanta South Container Terminal (Romania)

Road

The distances between GIFP and the following major regional centers are: 226 km to Chisinau, 242 km to Bucharest, 290 km to Odessa, 686 km to Kiev and 776 km to Lvov



PLOT B S = 0.76 ha
 PLOT C S = 0.25 ha
 PLOT D S = 1.55 ha
 PLOT E S = 0.85 ha
 PLOT F S = 0.09 ha
 PLOT H S = 0.66 ha
 PLOT L S = 0.70 ha

PLOT P S = 0.93 ha
 PLOT Q S = 2.75 ha

PLOT A S = 1.00 ha
 PLOT G S = 0.56 ha
 PLOT I S = 0.38 ha
 PLOT J S = 0.59 ha
 PLOT K S = 0.16 ha
 PLOT M S = 1.17 ha
 PLOT N S = 1.37 ha
 PLOT O S = 0.97 ha

INDUSTRIAL INVEST
 PROGRAIN ORGANOC
 IUNASISTEM
 PHOENIX
 DUNAV TIR
 TRANS CARGO
 TRANS CARGO
 TRANS BULK

Business Park

A business park developed and operated by Danube Logistics forms an integral part of Giurgiulesti International Free Port.

Due to the location and access to tri-modal transport infrastructure, residents of GIFP's business park have easy access to the markets of Moldova, Romania and Ukraine. Residents not only are exempt from excise taxes, VAT and import duties, but benefit from reduced corporate income tax, relatively low payroll expenses as well as favorable utility charges.

*For more information please visit
www.gfez.md*

Benefits

Diverse and multilingual labor force, exemption from excise taxes, VAT and import duties, reduced corporate income tax rates, newly constructed infrastructure, relatively low payroll expenses and favorable utility charges.

Opportunities

Lease of land, warehouse space, open-storage areas, production facilities as well as offices.



 DANUBE LOGISTICS

 S=8.54 ha FOR LEASE ZONES

 S=6.20 ha OCCUPIED ZONES

General Investor and Operator

ICS Danube Logistics SRL, a Moldovan limited liability company, is the general investor and operator of Giurgiulesti International Free Port. In December 2004 Danube Logistics

signed an investment agreement with the Government of Moldova for the construction and operation of Giurgiulesti International Free Port.



Contacts

ICS Danube Logistics SRL
Giurgiulesti International Free Port
Giurgiulesti, Cahul raion MD-531
Republic of Moldova
Phone: +373 (0) 299 68 599; 68 345; 68 645
Fax: +373 (0) 299 68 237
E-mail: info@danlog.md

ICS Danube Logistics SRL
Head office
Europa Business Center
4th floor, office 4A, 66, Al. Bernardazzi Str.
Chisinau MD-2009
Republic of Moldova
Phone: +373 (0) 22 999 225
Fax: +373 (0) 22 999 226
E-mail: info@danlog.md